

Civil Rights Data Collection

Eastern Suffolk BOCES
School Data Bank Services
Jennifer Raicovi
SDBS@esboces.org

What is included in the Civil Rights Data Collection?

- School & District Characteristics
- Discipline
- Harassment & Bullying
- Single-Sex Interscholastic Athletics
- Early Childhood Education
- Pathways to College & Career (includes Technology questions)
- Teachers & Other Personnel
- COVID Directional Indicators (Re-opening Plan)

Where to Find Resources:

<https://crdc.communities.ed.gov/#program>

The screenshot shows the homepage of the Civil Rights Data Collection (CRDC) Resource Center. At the top, there is a navigation bar with 'Home' and 'Collaborate' tabs. Below this is a program menu with 'Home' (highlighted), 'Getting Started', 'Search Resources', 'Training Videos', 'Contact PSC', and 'Survey Modules'. The main header features the Department of Education seal and the text 'CIVIL RIGHTS DATA COLLECTION RESOURCE CENTER'. To the right, a 'PARTNER SUPPORT CENTER' box provides contact information for the PSC (9am - 5pm ET, 855 255-6901) and a link to 'Email PSC'. A welcome message states: 'The Civil Rights Data Collection (CRDC) Partner Support Data Center (PSC) welcomes you to the CRDC Resource Center! This website contains resources for the CRDC, such as planning and preparation guides to assist in collecting and submitting your data, data tips, and CRDC data submission tool training documents. Click the buttons below for more information to get started.' Below this are two large blue buttons: 'SUBMISSION SYSTEM' and 'SEARCH RESOURCES', both with mouse cursor icons. At the bottom left, it says 'ANNOUNCEMENTS' followed by 'scroll for additional announcements'. On the bottom right, there is a 'HELPFUL VIDEO RESOURCE' box with a video thumbnail and the text 'Click to access the CRDC Resource Center Overview video'.

Home Collaborate

Program: **Home** | Getting Started | Search Resources | Training Videos | Contact PSC | Survey Modules

Home

Home > Overview > Home

 **CIVIL RIGHTS DATA COLLECTION
RESOURCE CENTER**

PARTNER SUPPORT CENTER

Contact PSC
(9am - 5pm ET)
855 255-6901

[click to Email PSC](#)

The Civil Rights Data Collection (CRDC) Partner Support Data Center (PSC) welcomes you to the CRDC Resource Center! This website contains resources for the CRDC, such as planning and preparation guides to assist in collecting and submitting your data, data tips, and CRDC data submission tool training documents. Click the buttons below for more information to get started.

SUBMISSION SYSTEM 

SEARCH RESOURCES 

ANNOUNCEMENTS [scroll for additional announcements](#)

HELPFUL VIDEO RESOURCE


Click to access the
CRDC Resource Center
Overview video


Contacting the Partner Support Center (PSC)

[Home](#) | [Collaborate](#)

Program: [Home](#) | [Getting Started](#) | [Search Resources](#) | [Training Videos](#) | [Contact PSC](#) | [Survey Modules](#)

Contact PSC

[Home](#) > [Overview](#) > [Contact PSC](#)



CIVIL RIGHTS DATA COLLECTION PSC EMAIL FORM

For assistance, please complete the PSC Email Form below:

- Select the State before choosing the LEA or Agency Name.
- To find the LEA or Agency Name, try entering a keyword in the field.
- Having trouble? Please contact the PSC via phone (855) 255-6901 or email at crdc@aemcorp.com

* Requester Name:

* Requester Email:

* Call Back Number: Ext:
555-555-5555

* State:

Please select ▼

Vendors/Researchers should use "Vendor" or "Researcher" for State code

* LEA or Agency Name:

Please select ▼

Location: City:

If inquiring about multiple LEAs, check the box and list the LEAs in the Work Order Description ☐

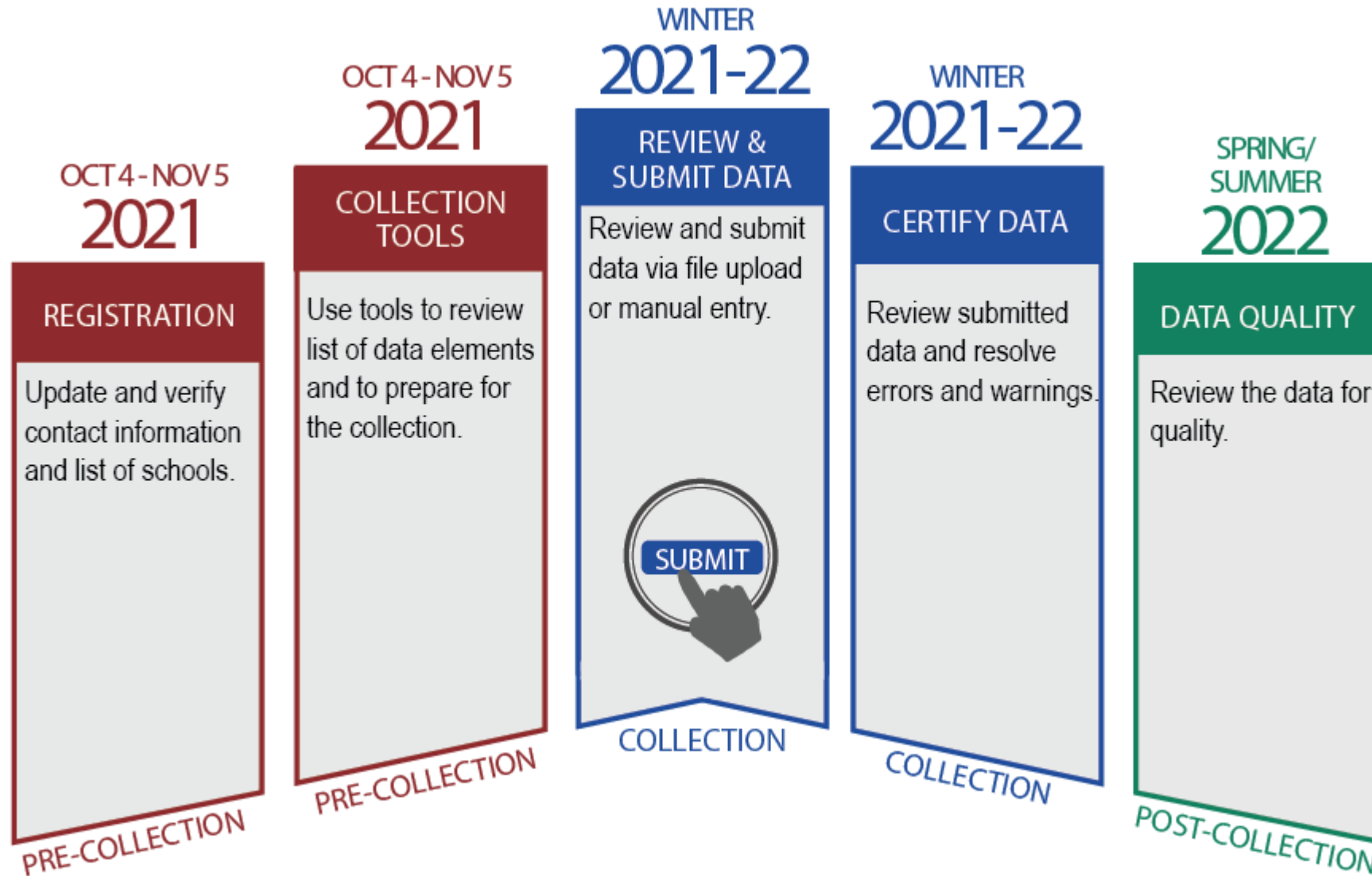
CRDC Topic Area or Modules (if applicable, up to 5 inquiries):

Inquiry 1:

Please select LEA or School Form Type ▼

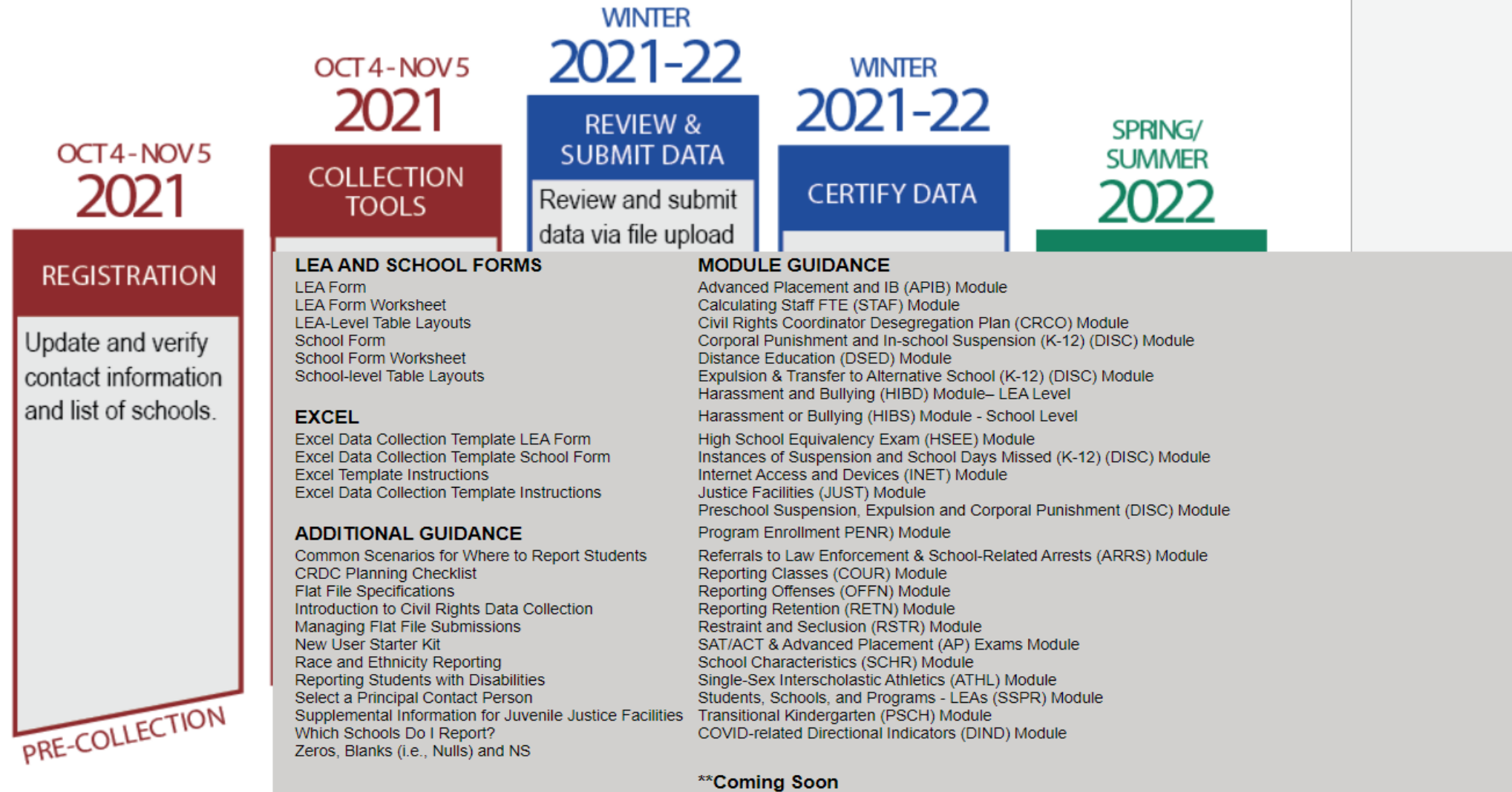
Please select Module Type ▼

Timeline for 2021-22

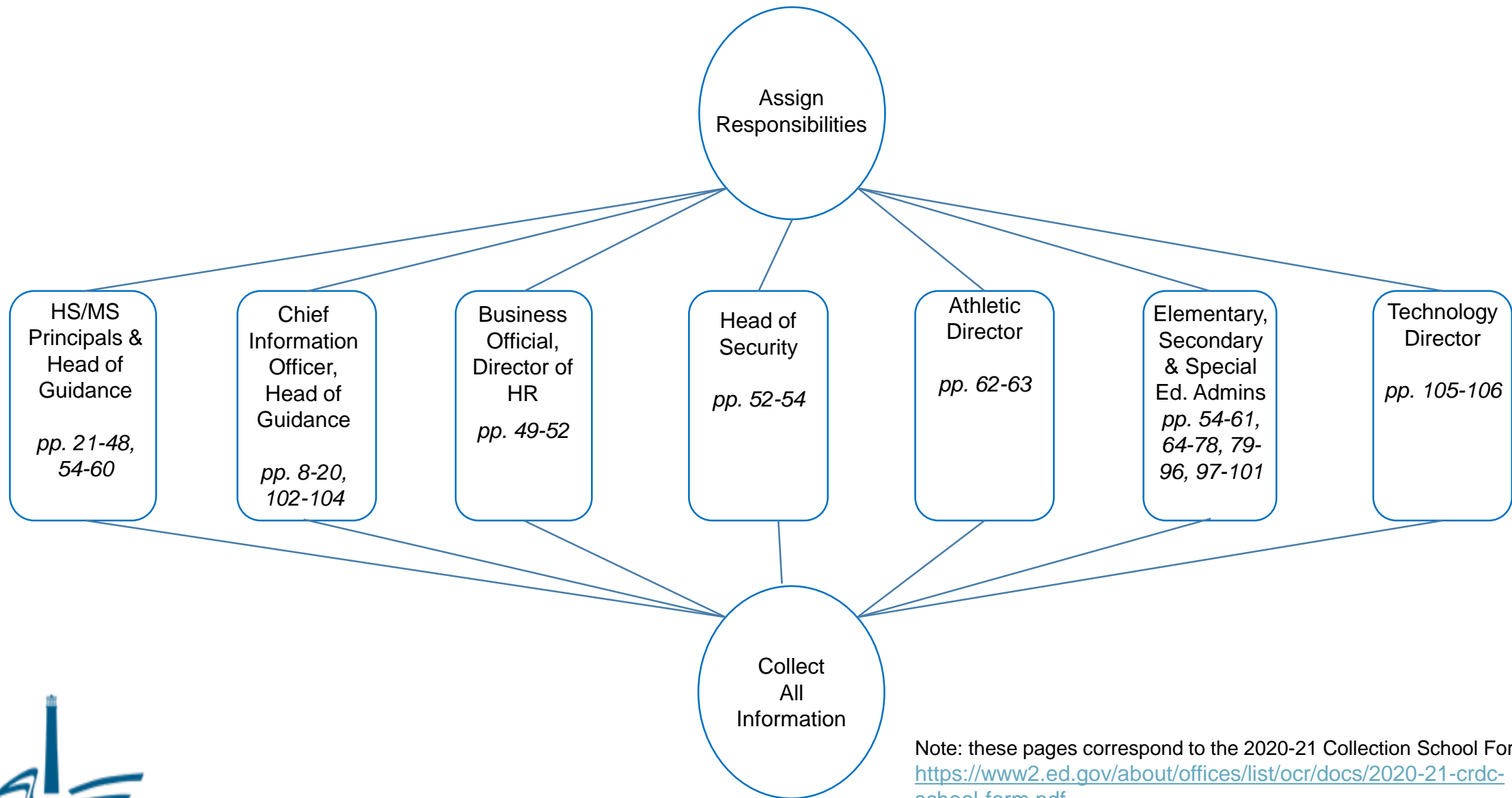


Pre-collection Resources:

Hover over Collection Tools for Links to all Needed Forms



Assigning Responsibilities - Who Does What...



Note: these pages correspond to the 2020-21 Collection School Form
<https://www2.ed.gov/about/offices/list/ocr/docs/2020-21-crdc-school-form.pdf>



Survey Modules

[Home](#) | [Collaborate](#)

Program: [Home](#) | [Getting Started](#) | [Search Resources](#) | [Training Videos](#) | [Contact PSC](#) | [Survey Modules](#)

Survey Modules

[Home](#) > [Overview](#) > [Survey Modules](#)



CIVIL RIGHTS DATA COLLECTION Survey Modules



PARTNER SUPPORT CENTER
Contact PSC
(9am - 5pm ET)
(855) 255-6901
[click to Email PSC](#)

The Civil Rights Data Collection (CRDC) School Form and LEA Form are used to gather school and LEA level data for reporting.

Below are individual module documents for the LEA Form and School Form to assist in collecting data for those users who would like to easily access only the modules that they are responsible for. These abbreviated documents are intended for **data gathering purposes only** and are not official submission forms.

If you are providing data for one or a few modules, feel free to use the individual module links below to download individual modules.

School Form Modules (click on module name for download)

 DIND: COVID-related Directional Indicators	 SECR - School Security Staff
 SCHR - School Characteristics	 RETN - Retention
 PSCH - Preschool & Transitional Kindergarten	 ATHL - Single-Sex Interscholastic Athletics
 ENRL - Enrollment	 DISC: Student Discipline (Suspension, Expulsion and Corporal Punishment)
 PENR - Program Enrollment (Gifted & Talented, Dual Enrollment)	 ARRS: Student Discipline (Referrals to Law Enforcement & School-Related Arrests)
 COUR - Courses & Classes	 OFFN - Offenses
 APIB - Advanced Placement (AP) & International Baccalaureate Diploma	 HIBS - Harassment & Bullying

Responsibility Timeline

Create your own timeline by establishing due dates

- Reporting Window opens **December 13th, 2021**
- 75 **Calendar** days to complete and submit the form
- Submission closes **February 28th, 2022**
- Within this timeframe there will be:
 - Winter Break
 - January Regents Exams
 - Mid-Winter Break

This falls
under
**Principal
Contact
Person**

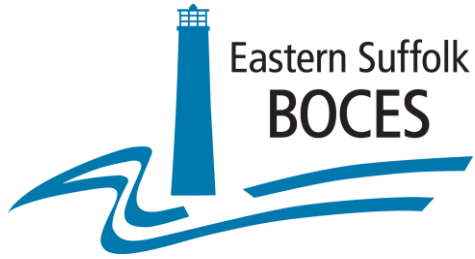


Collection Phase: CRDC School Form - Excel

<https://watch.screencastify.com/v/WYnmXuAxRLY6PMTuFxNS>

	B	C	D	E
	Required/ Optional for 2020-21 Entry	Module for Online Data Entry	School Information	
1				
2				LEA 7 Digit NCES ID Code
3				School 12 Digit NCES ID Code
4				School Name
5			DIND: COVID-related Directional Indicators	
6	Required	Directional In	DIND-1	
7	Required	Directional In	Directional Indicator – Instruction Type	
			Please select the option that best describes the effect of the coronavirus pandemic on instruction during the 2020–21 school year at this school.	
			(A.) We offered only in-person instruction with additional safety precautions because of the coronavirus pandemic.	
			(B.) We offered only virtual instruction because of the coronavirus pandemic.	
			(C.) We offered a hybrid of in-person and virtual instruction (e.g., some students received in-person instruction while others received virtual instruction) because of the coronavirus pandemic.	
			(D.) There was no effect on the instruction we offered because of the coronavirus pandemic.	
8	Required	Directional In (1)		
9	Required	Directional In	DIND-2	
10	Required	Directional In	Directional Indicator – Virtual Instruction	
			Which of the following best describes your virtual instruction setting?	
			(A.) Students were physically in the school setting, while teachers who provided	





<https://padlet.com/jraicovi1/8uenouglnxjtaugg>

To continue the conversation...

Contact Vanessa Biagioli-Dittrich at 631-419-1688 or reach out via email at SDBS@esboces.org



Eastern Suffolk BOCES Board and Administration

President

Lisa Israel

Vice President

William K. Miller

Member and Clerk

Fred Langstaff

Members

Arlene Barresi
Stephen L. Gessner, Ph.D.
Linda S. Goldsmith
William Hsiang
Susan Lipman
Joseph LoSchiavo

Anne Mackesey
James F. McKenna
Brian O. Mealy
Catherine M. Romano
John Wyche

District Superintendent

David Wicks

Chief Operating Officer

Julie Davis Lutz, Ph.D.

Deputy Superintendent

Ryan J. Ruf - Management Services

Associate Superintendent

Claudy Damus-Makelele - Educational Services

Assistant Superintendent

- Human Resources

Directors

Leah Arnold - Career, Technical and Adult Education
Kate Davern - Educational Support Services
Mark Finnerty - Facilities
April Francis-Taylor - Diversity, Equity, and Inclusivity
Colleen Lipponer - Business Services
Susan Maddi - Administrative Services
Grant Nelsen - Technology Integration
Gina Reilly - Special Education
Darlene Rocas - Regional Information Center

www.esboces.org

Eastern Suffolk BOCES does not discriminate against any employee, student, applicant for employment, or candidate for enrollment on the basis of sex, gender, race, color, religion or creed, age, weight, national origin, marital status, disability, sexual orientation, gender identity or expression, transgender status, military or veteran status, domestic violence victim status, genetic predisposition or carrier status, or any other classification protected by Federal, State, or local law. This policy of nondiscrimination includes: access by students to educational programs, student activities, recruitment, appointment and promotion of employees, salaries, pay, and other benefits. ESBOCES also provides equal access to the Boy Scouts and other designated youth groups. ESBOCES fully complies with all applicable rules and regulations pertaining to civil rights for students and employees (e.g., Title IX of the Education Amendments of 1972, §504 of the Rehabilitation Act of 1973, Titles VI and VII of the Civil Rights Act of 1964, Dignity for All Students Act, §303 of Age Discrimination Act of 1975, the Americans with Disabilities Act of 1990, and the Boy Scouts of American Equal Access Act of 2001). Inquiries regarding the implementation of the above laws should be directed to either of the ESBOCES Civil Rights Compliance Officers at ComplianceOfficers@esboces.org: the Assistant Superintendent for Human Resources, 631-687-3029, or the Associate Superintendent for Educational Services, 631-687-3056, 201 Sunrise Highway, Patchogue, NY 11772. Inquiries may also be addressed to the Office for Civil Rights at the US Department of Education, 32 Old Slip, 26th Floor, New York, NY 10005, 646-428-3800, OCR.NewYork@ed.gov.

OCR 5191 1/21 KM/WS